

FORSYTH COUNTY

BOARD OF COMMISSIONERS

MEETING DATE: MAY 24, 2018

AGENDA ITEM NUMBER: 7

SUBJECT:

RESOLUTION SUPPORTING THE ELIGIBILITY FOR AND NOMINATION OF THE WILLIAM HENRY AND SARAH HAUSER SPEAS HOUSE FOR THE NATIONAL REGISTER OF HISTORIC PLACES

(3991 RIVER RIDGE ROAD, PFAFFTOWN, FORSYTH COUNTY)

COUNTY MANAGER'S RECOMMENDATION OR COMMENTS: Recommend Approval

SUMMARY OF INFORMATION:

The National Register is a federal program administered by the National Park Service and is the nation's official list of historic buildings worthy of preservation. Listing on the Register is predominantly an honor and does not affect the rights of a private property owner. A citizen initiated the nomination of the William Henry and Sarah Hauser Speas House (3991 River Ridge Road, Pfafftown, Forsyth County) and the owner of the property supports having the property listed on the National Register. Unlike Local Historic Landmark designation, there is no local property tax deferral associated with the National Register Program. However, National Register listing does allow a property owner to utilize federal funds or tax credits for qualified rehabilitation work to a property.

Federal and State guidelines for the Certified Local Government Program require that Forsyth County participate in the process of nominating properties to the National Register. This participation involves the review of nominations by the Historic Resources Commission (HRC) and the County Commissioners. The HRC and the County Commissioners are given sixty (60) days to comment on the proposed nomination and are required to submit comments to the State Historic Preservation Office relaying their findings as to the eligibility of the properties under consideration for listing in the National Register. The HRC and County Commissioners are to comment as to whether they believe the property meets the criteria for National Register listing. The National Register Criteria for Evaluation have been included for information. This nomination was completed by a State qualified historic preservation consultant and the evidence that this property meets the criteria for listing was taken from the consultant's report.

ATTACHMENTS:- YES NO

SIGNATURE: J. Dudley Carter, Jr. /cdh DATE: May 23, 2018
County Manager

SUMMARY OF INFORMATION CONTINUED:

The information below was taken from the National Register Nomination for the William Henry and Sarah Hauser Speas House completed by hmwPreservation for the property owner, Brighthill Farm, LLC.

The William Henry and Sarah Hauser Speas House meets National Register of Historic Places Criterion C for architecture as a rare intact example of a mid- to late-nineteenth century eclectic brick farm house in Forsyth County. The nineteenth century portions of the building exhibit Greek Revival- and Italianate-style details and retains a high degree of material integrity. Additionally, the existence of a brick curing house from the same period is rare.

The period of significance extends from c. 1850 to c. 1889 and encompasses the original construction of the c. 1850 brick I-house, the 1879 Victorian-era addition, and the c. 1879-1889 rear frame wing. The period of significance includes all major building periods associated with the house and illustrates the prominence of the Speas Family in the late nineteenth century.

The house maintains the integrity of location, design, setting, materials, workmanship, feeling, and association necessary for local historic landmark designation.

The Forsyth County Historic Resources Commission considered the eligibility of the William Henry and Sarah Hauser Speas House at its meeting on May 2, 2018. At this meeting it determined that the nomination meets the criteria for listing on the National Register.

**RESOLUTION SUPPORTING THE ELIGIBILITY FOR AND NOMINATION OF
THE WILLIAM HENRY AND SARAH HAUSER SPEAS HOUSE FOR THE
NATIONAL REGISTER OF HISTORIC PLACES
(3991 RIVER RIDGE ROAD, PFAFFTOWN, FORSYTH COUNTY)**

BE IT RESOLVED that the Forsyth County Board of Commissioners, on behalf of Forsyth County, designated as a Certified Local Government, having reviewed and received through the local Historic Resources Commission public comment on the National Register nomination of the William Henry and Sarah Hauser Speas House (3991 River Ridge Road, Pfafftown, Forsyth County), hereby finds that the said property meets the criteria for and supports nomination for listing in the National Register of Historic Places.

BE IT FURTHER RESOLVED that the Forsyth County Board of Commissioners, therefore, recommends that the above finding regarding the William Henry and Sarah Hauser Speas House be forwarded and submitted to the appropriate State and federal officials for consideration and listing on the National Register of Historic Places.

Adopted this the 24th day of May 2018.

**NORTH CAROLINA DEPARTMENT OF CULTURAL RESOURCES
DIVISION OF ARCHIVES AND HISTORY
STATE HISTORIC PRESERVATION OFFICE
4617 Mail Service Center, Raleigh NC 27699 4617**

NATIONAL REGISTER FACT SHEET 2

NATIONAL REGISTER CRITERIA FOR EVALUATION

The following criteria are designed to guide the states, federal agencies, and the Secretary of the Interior in evaluating potential entries for the National Register.

The quality of significance in American history, architecture, archaeology, and culture is present in districts, sites, buildings, structures, and objects that possess integrity of location, design, setting, materials, workmanship, feeling, and association, and:

- A. that are associated with events that have made significant contribution to the broad patterns of our history; or
- B. that are associated with the lives of persons significant in our past; or
- C. that embody the distinctive characteristics of a type, period, or method of construction, or that represent the work of a master, or that possess high artistic values, or that represent a significant and distinguishable entity whose components may lack individual distinction; or
- D. that have yielded, or may be likely to yield, information important in prehistory or history.

Criteria Considerations (Exceptions): Ordinarily cemeteries, birthplaces, or graves of historical figures, properties owned by religious institutions or used for religious purposes, structures that have been moved from their original locations, reconstructed historic buildings, properties primarily commemorative in nature, and properties that have achieved significance within the past 50 years shall not be considered eligible for the National Register. However, such properties will qualify if they are integral parts of districts that do meet the criteria or if they fall within the following categories:

- A. a religious property deriving primary significance from architectural or artistic distinction or historical importance; or
- B. a building or structure removed from its original location but which is significant primarily for architectural value, or which is the surviving structure most importantly associated with a historic person or event; or

C. a birthplace or grave of a historical figure of outstanding importance if there is no other appropriate site or building directly associated with his or her productive life; or

D. a cemetery that derives its primary significance from graves of persons of transcendent importance, from age, from distinctive design features, or from association with historic events; or

E. a reconstructed building when accurately executed in a suitable environment and presented in a dignified manner as part of a restoration master plan, and when no other building or structure with the same association has survived; or

F. a property primarily commemorative in intent if design, age, tradition, or symbolic value has invested it with its own historical significance; or

G. a property achieving significance within the past 50 years if it is of exceptional importance.

APPLYING THE CRITERIA

The two principal issues to consider in determining eligibility for the National Register are "significance" and "integrity."

A property may have "significance" for association with important events or patterns of history (criterion A); for association with an important historical figure (criterion B); as an important example of period architecture, landscape, or engineering (criterion C); or for the information it is likely to yield (criterion D, applied to archaeological sites and districts, and sometimes applied to certain types of structures). A National Register nomination must demonstrate how a property is significant in at least one of these four areas. For properties nominated under criterion A, frequently cited areas of significance are agriculture, community planning and development, social history, commerce, industry, politics and government, education, recreation and culture, and others. For technical reasons, criterion B (significant person) nominations are rare. Criterion C (architecture) is cited for most, but not all, nominations of historic buildings. Archaeological sites are always nominated under criterion D, but may also have significance under one or more of the other three criteria.

Properties are nominated at either a local, state, or national level of significance depending on the geographical range of the importance of a property and its associations. The level of significance must be justified in the nomination. The majority of properties (about 70%) are listed at the local level of significance. The level of significance has no effect on the protections or benefits of listing.

Besides meeting one or more of the above criteria, a property must also have "integrity" of "location, design, setting, materials, workmanship, feeling, and association." This means that the property must retain enough of its historic physical character (or in the case of archaeological sites, intact archaeological features) to represent its historic period and associations adequately.

All properties change over time, and in some cases past alterations can take on historical significance in their own right. The degree to which more recent, incompatible, or non-historic alterations are acceptable depends on the type of property, its rarity, and its period and area of significance. Buildings with certain types of alterations are usually turned down by the National Register Advisory Committee. For example, 19th and early 20th century wood frame buildings that have been brick veneered in the mid-20th century are routinely turned down for loss of historic integrity.

Criteria Exceptions

The criteria exclude birthplaces and graves of historical figures, cemeteries, religious properties, moved buildings, reconstructions, commemorative properties, and properties less than 50 years old, with certain exceptions. The following exceptions are sometimes encountered:

Historic churches that retain sufficient architectural integrity can usually be successfully nominated under criterion C (architecture), sometimes together with criterion A for social or religious history.

Cemeteries may sometimes successfully be nominated under criterion C when they retain important examples of historic stone carving, funerary art, and/or landscaping, and they also may be eligible under criterion A or criterion D. However, both the National Register Advisory Committee and the National Register have turned down nominations of graves when the historical importance of the deceased is the sole basis for the nomination. The National Register was created primarily to recognize and protect historic places and environments that represent how people lived, worked, and built in the historic past. Human burials are recognized and protected under other laws and programs.

Moved buildings may sometimes be successfully nominated under criterion C for architecture when they remain in their historic communities and the new setting adequately replicates the original setting. The point to remember is that the program is called the National Register of Historic Places, not Historic Buildings or Historic Things, because significance is embodied in locations and settings as well as in the structures themselves. Buildings moved great distances, buildings moved into incompatible settings (such as a farmhouse moved into an urban neighborhood or a downtown residence moved to a suburb), and collections of buildings moved from various locations to create a pseudo historic "village" are routinely turned down. In some cases, the relocation of a historic building to a distant or incompatible setting may be the last and only way to save it, and such an undertaking may be worthwhile. However, sponsors of such a project must understand that the property subsequently may not be eligible for the National Register.

If a property is less than 50 years old, it can be nominated only if a strong argument can be made for exceptional significance. For example, Dorton Arena on the State Fairgrounds was completed in 1953. It was successfully nominated to the National Register in 1973 as one of the most important examples of modernism in post WWII American architecture.

William Henry and Sarah Hauser Speas House School Site Map

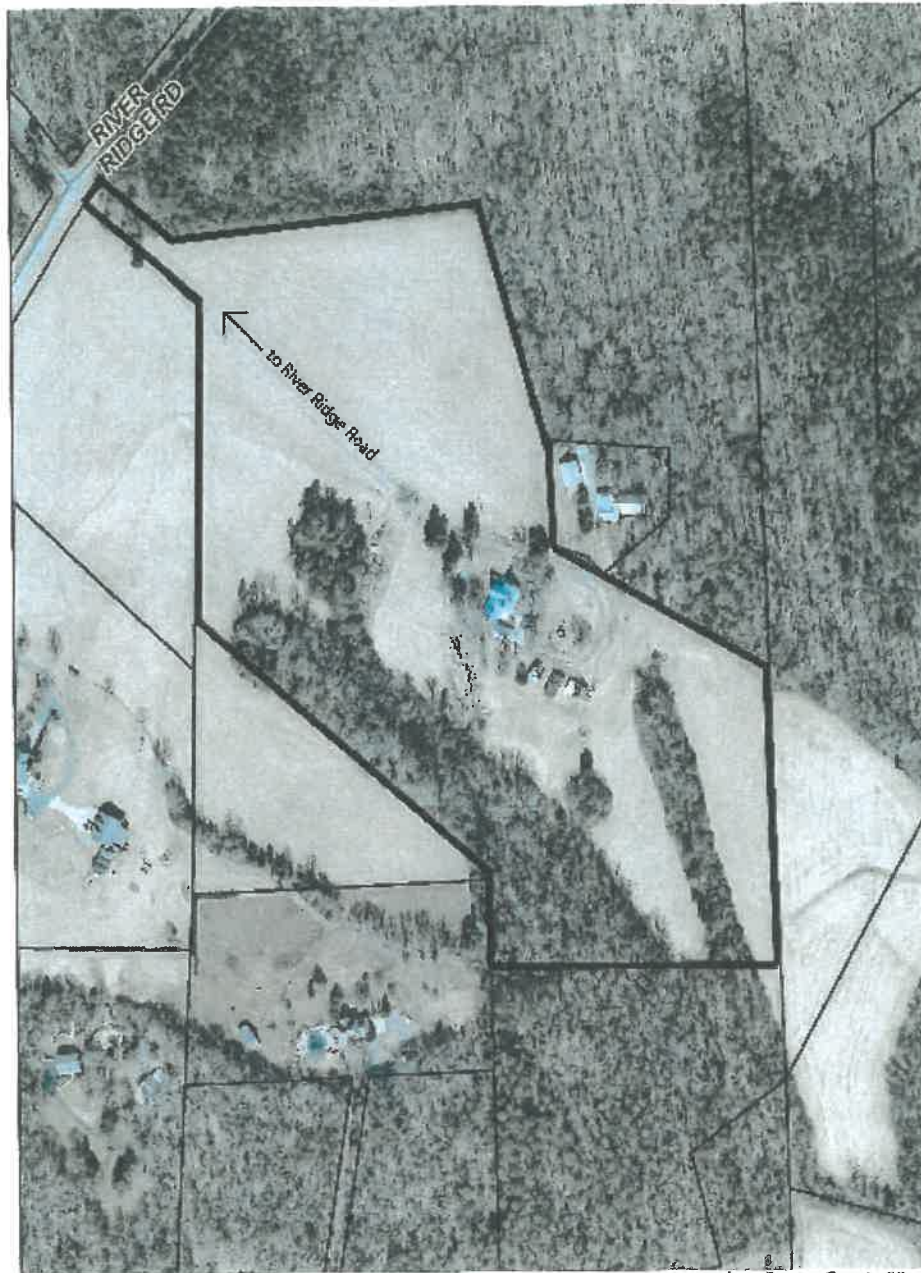


Image from Forsyth County GIS

William Henry and Sarah Hauser Speas House
3991 River Ridge Road, Pfafftown
Forsyth County, NC

Tax Map with National Register Boundary
 National Register Boundary

1. House
2. Curing House
3. Granary
4. Chicken House
5. Equipment Shed
6. Wellhouse
7. Carport



Scale 1" = 200'


William Henry and Sarah Hauser Speas House Photographs



William Henry and Sarah Hauser Speas House Photographs

